



**Forklift**

## Starters & Alternators

- ✓ 100% new units - Outright sales
- ✓ No core charges or handling
- ✓ Warranty rate reduction through extended field life of new units
- ✓ Extensive coverage including late-model products

## Product line coverage

### 100+ part numbers

- ✓ Coverage on Gas-Propane-Diesel Models

## Field proven quality

- ✓ Premium brand Transpo electronics manufactured by WAI
- ✓ Premium grade WBD bearings
- ✓ Tested to OEM specifications
- ✓ Alternators – Thorough testing of output current at idle and full-load RPMs
- ✓ Starters – RPM, torque, voltage and solenoid performance

### Validation testing includes:

- Endurance • Humidity • Power thermal cycling
- Vibration • Salt spray • Thermal shock



# Top 10 Starters & Alternators



The Power of WAI

16831N



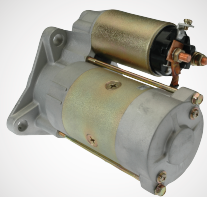
**Starter-Denso OSGR**  
**1.4kW/12 Volt, CW, 9-Tooth Pinion**  
**Replaces:** Denso 028000-4000, 028000-4001, 028000-4020, & more  
**Used on:** Toyota (1967-2007)  
**Lester:** 16578, 16831, 18410, 18515

18096N



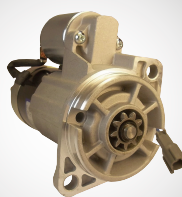
**Starter-Mitsubishi PMGR**  
**1.2kW/12 Volt, CW, 8-Tooth Pinion**  
**Replaces:** Clark 2314322, 3114995, Hyster 1534424, 2314322, 3114995, Mazda FFSC-18-400, & more  
**Used on:** Hyster (1998-2006), Nissan (1986-2006), Yale (1998-2006)  
**Lester:** 18096

18171N



**Starter-Mitsubishi OSGR**  
**2.7kW/12 Volt, CW, 13-Tooth Pinion**  
**Replaces:** Hyster 2021166, 3068346, Mazda 4840-18-400, & more  
**Used on:** Hyster (1985-2002), Sumitomo Yale (1982-2002), & more  
**Lester:** 18171

18973N



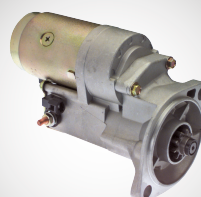
**Starter-Mitsubishi PMGR**  
**12 Volt, CW, 9-Tooth Pinion**  
**Replaces:** Mitsubishi M000T65381, M000T65581, M000T65585, Nissan, Infiniti 23300-F4U010, & more  
**Used on:** Caterpillar Ag. & Ind. (2004-2009), & more  
**Lester:** 18973

17437N



**Starter-Mitsubishi PMGR**  
**1.2kW/12 Volt, CW, 9-Tooth Pinion**  
**Replaces:** Mitsubishi M001T60081, M001T60381, Nissan, Infiniti 23300-K9160, 23300-W9810  
**Used on:** Nissan (1975-2007), TCM Equipment (1987-2007)  
**Lester:** 17437

18449N



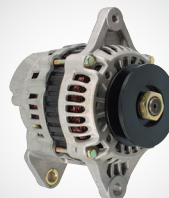
**Starter-Denso OSGR**  
**2.2kW/12 Volt, CW, 9-Tooth Pinion**  
**Replaces:** Denso 128000-0830, 128000-0831, 128000-0832, & more  
**Used on:** Hyster (1994-2006), Isuzu (1992-2006), & more  
**Lester:** 17303, 18449

6792N



**Starter-Delco PG260G PMGR**  
**1.4kW/12 Volt, CW, 11-Tooth Pinion**  
**Replaces:** Delco 8000282, 9000839, 9000840, 9000884, & more  
**Used on:** Hyster (1998-2009), Mercruiser (1995-2009), & more  
**Lester:** 6791, 6792

12138N



**Alternator-Mitsubishi IR/IF-40**  
**Amp/12 Volt, CW, 1-Groove Pulley**  
**Replaces:** Clark 7000215, Hyster 1361853, 1450928, 3068342, 3114961, 3123908, 800045600, & more  
**Used on:** Hyster (1992-2006), Sumitomo Yale (1992-2002), Yale (1985-2006)  
**Lester:** 12138

12180N



**Alternator-Denso IR/IF**  
**35 Amp/12 Volt, CW, 1-Groove Pulley**  
**Replaces:** Denso 100211-1660, 100211-1661, 100211-1662, & more  
**Used on:** Toyota (1981-2007)  
**Lester:** 12180

12357N



**Alternator-Denso IR/IF-50 Amp/12**  
**Volt, CW, Neg. Grd., 1-Groove Pulley**  
**Replaces:** Denso 101211-3730, 101211-3731, 101211-8580, 101211-8650, 101211-8700, & more  
**Used on:** Toyota (1993-2001)  
**Lester:** 12357



## Europe

WAI Europe b.v.  
 Klappolder 225  
 2665 MR Bleiswijk  
 The Netherlands

Phone: +31 (0)10 524 1980

## United Kingdom

WAIglobal UK Ltd  
 Christie Place  
 Durban Road  
 Bognor Regis  
 West Sussex PO22 9RT

Phone: +44 (0)1243 833 420

## Poland

WAIglobal Polska  
 Reslogistic  
 Park Logistyczny Rogoźnica  
 Rogoźnica 306 A  
 30-060 Głogów Małopolski (k.Rzeszowa)

Phone: +48 (0)17 77 25 805

WAI, A USA COMPANY

